

A

B

C

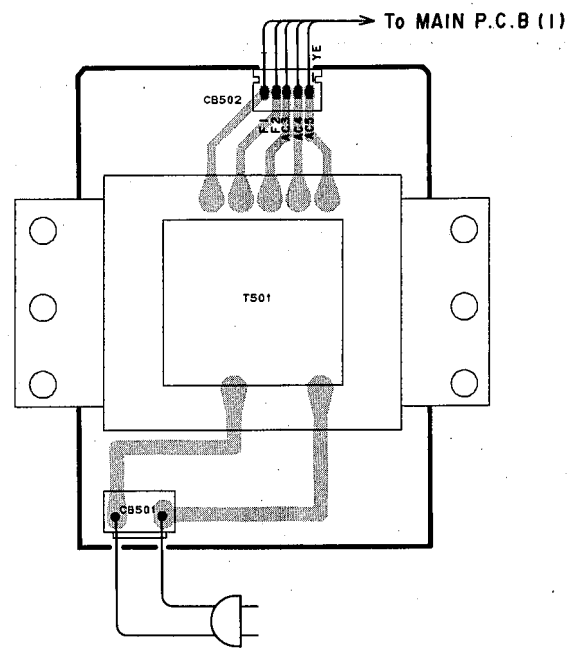
D

E

PRINTED CIRCUIT BOARD (Pattern side view) KX-390

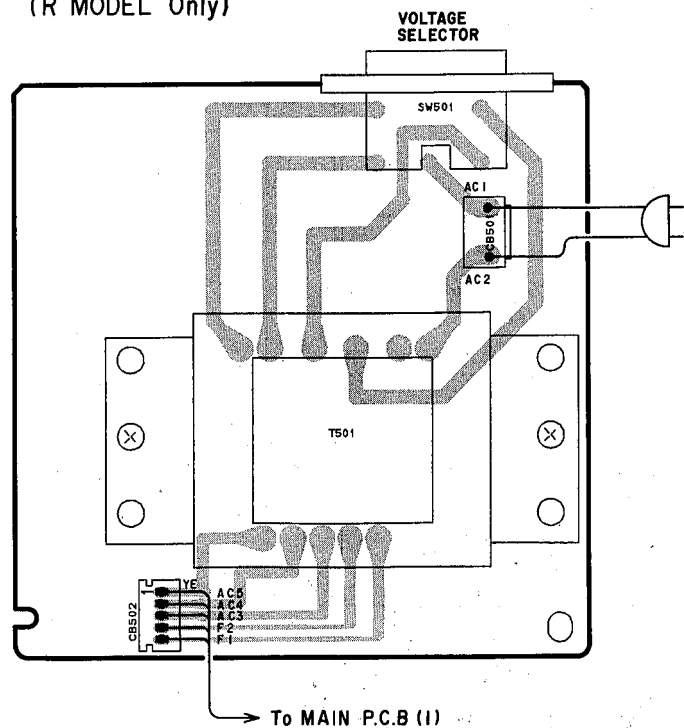
TRANSFORMER P.C.B

(Except R MODEL)



TRANSFORMER P.C.B

(R MODEL Only)



A

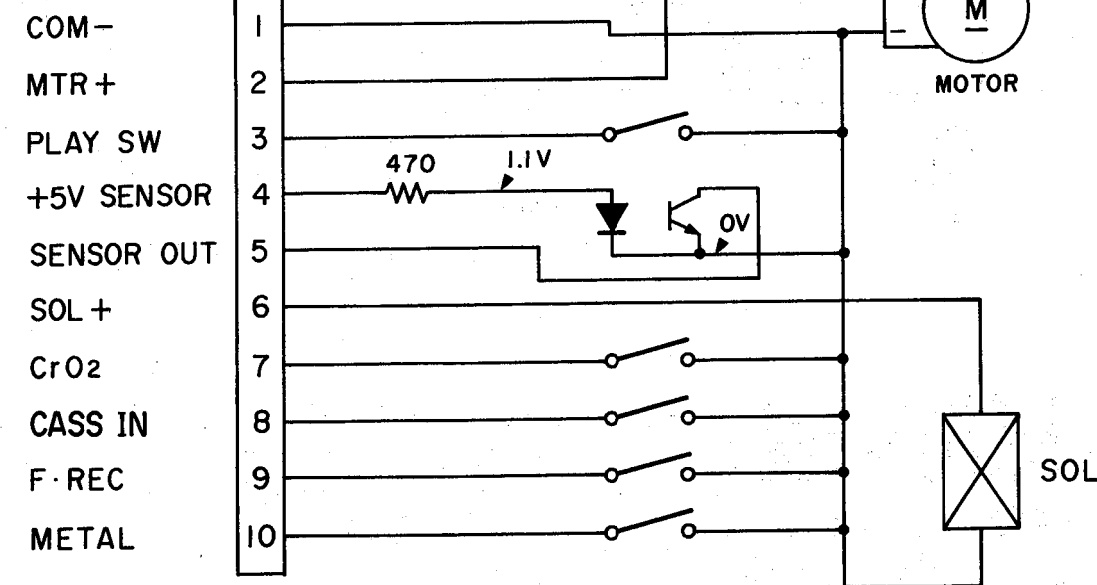
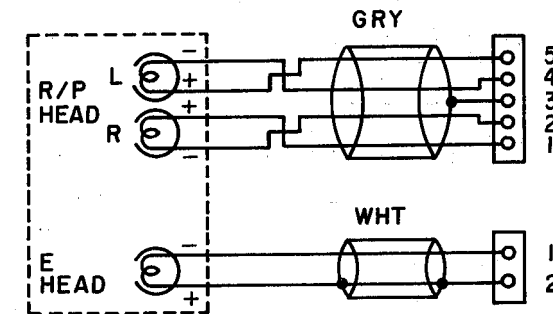
B

C

D

E

SCHEMATIC DIAGRAM (Cassette Mechanism) KX-390



1

2

3

4

5

6

7

1

2

3

4

5

6

7

RESISTOR		CAPACITOR	
REMARKS	PARTS NAME	REMARKS	PARTS NAME
NO MARK	CARBON FILM RESISTOR (1/4W)	NO MARK	ELECTROLYTIC CAPACITOR
△	METAL OXIDE FILM RESISTOR	△	TANTALUM CAPACITOR
□	METAL FILM RESISTOR	○	NO MARK CERAMIC CAPACITOR
◇	METAL PLATE RESISTOR	◎	AXIAL LEAD CERAMIC CAPACITOR
▽	FIRE PROOF CARBON FILM RESISTOR	⊙	POLYESTER FILM CAPACITOR
○	CEMENT MOUNTED RESISTOR	⊖	POLYPROPYLENE FILM CAPACITOR
⊙	SEMI VARIABLE RESISTOR	⊕	MICA CAPACITOR
■	CHIP RESISTOR	⊖	POLYPROPYLENE FILM CAPACITOR
		●	SEMICONDUCTIVE CERAMIC CAPACITOR

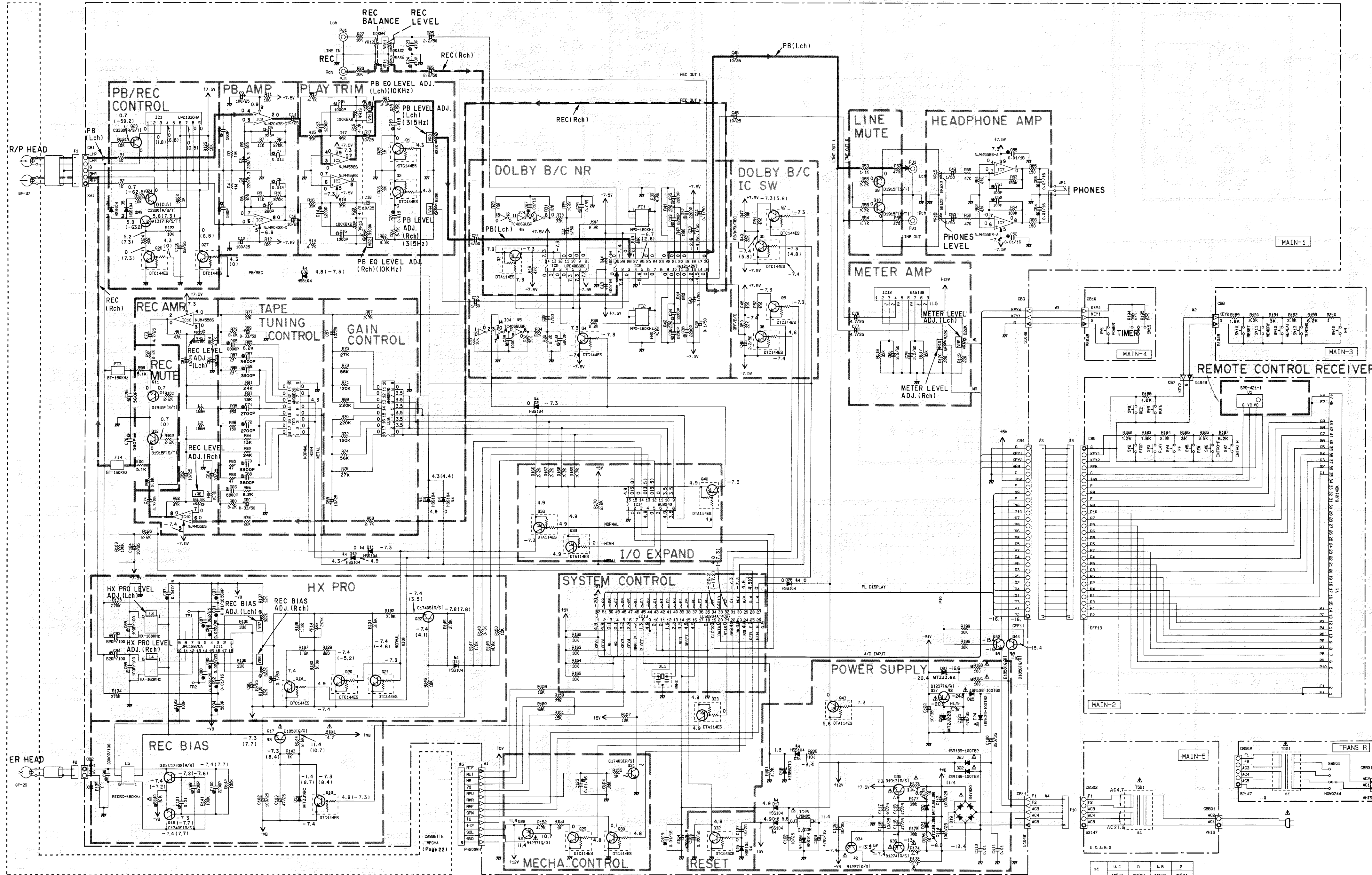
NOTICE
 (J)..... Japanese model
 (U)..... U.S.A. model
 (C)..... Canadian model
 (A)..... Australian model
 (E)..... European model
 (S)..... Spanish model
 (R)..... General model
 (P)..... PP model

Interchangeable Parts at Manufacture Stage

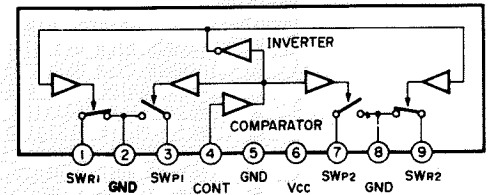
Mark	Reference Parts Number	Parts Name
K1	098-34-37	200123710/R1
K2	017-42-44	200109010/R1
K3	015-51-10-14-17-20-29-31-32	H05104 IS5133 H05176

MS	IC4	TC4069UBP UPD4069C

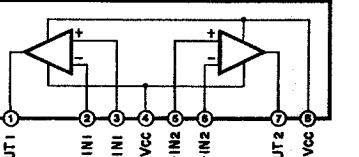
→ PB SIGNAL ● The voltages are measured using LH tape in the PLAY mode (no signal condition).
 → REC SIGNAL Only the voltage in () are at the REC mode.



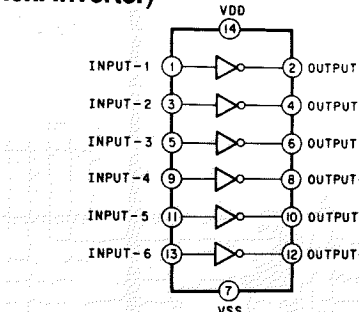
IC BLOCK
 IC1: μPC1330HA
 (2ch Head Selector Switch)



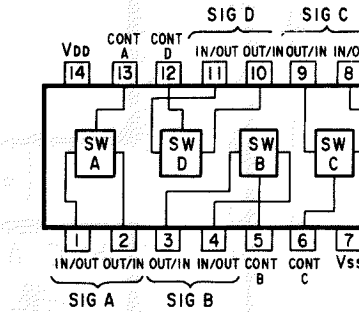
IC2: NJM2043LD
 IC3, 6: NJM4558L
 IC7: NJM4556AL
 (Dual OP-Amp)



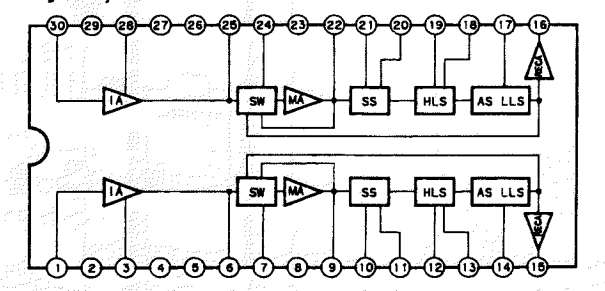
IC4: TC4069UBP
 (Hex. Inverter)



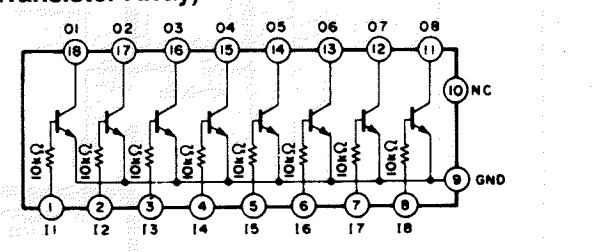
IC5, 19: μPD4066BC
 (Analog Switch)



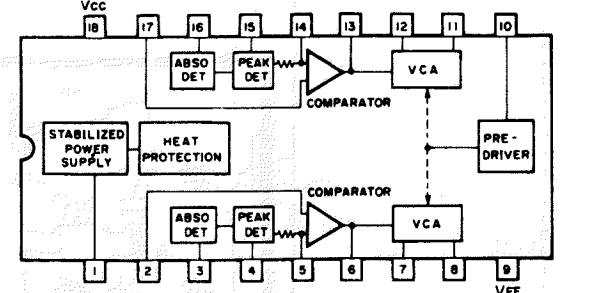
IC6: HA12142NT
 (Dolby NR)



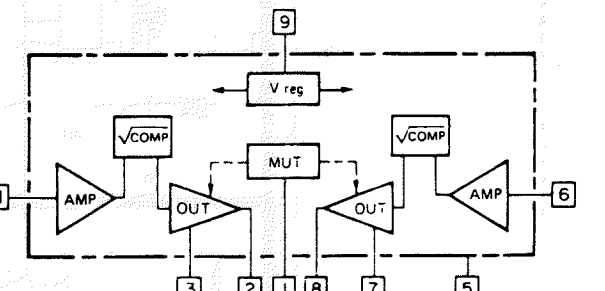
IC8, 9: AN90B20
 (Transistor Array)



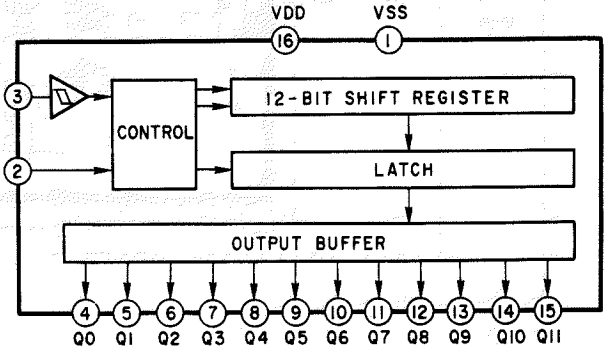
IC11: μPC1297CA
 (HX-PRO)



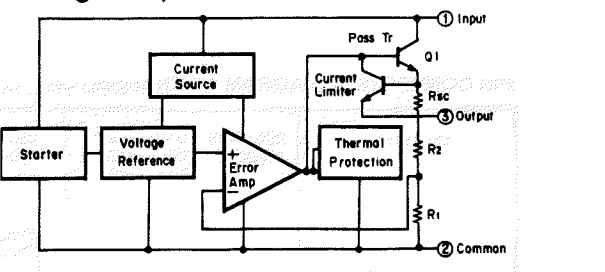
IC12: BA6138
 (1/2W Power of Compressor Amp.)



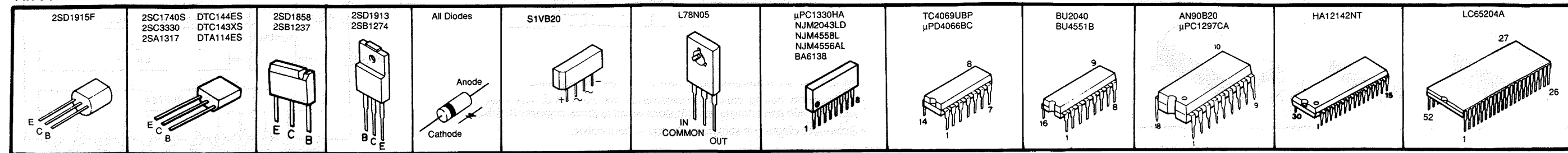
IC14: BU2040
 (IO Expander)



IC15: L78N05
 (+5V Regulator)



PIN CONNECTION DIAGRAM OF TRANSISTORS, DIODES AND ICs.



All voltages are measured with a 10MΩ/V DC electric volt meter.
 Components having special characteristics are marked △ and must be replaced with parts having specifications equal to those originally installed.
 Schematic diagram is subject to change without notice.

■ SCHEMATIC DIAGRAM (Cassette Mechanism)

